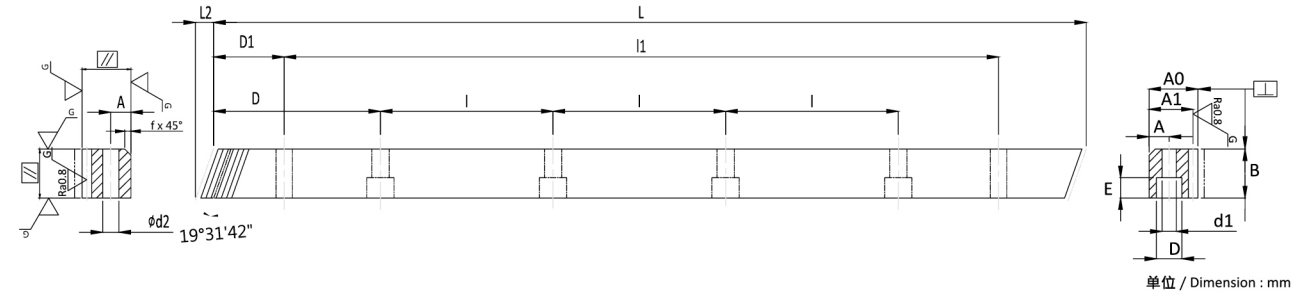


1st	2nd	3rd	4th	5th	6th	7th	8th
材料 Material	齿型 Type	棒型 Shape	齿面处理 Teeth Treatment	硬度处理 Hardness	模数 Module	长度 Length	等级 Grade
C	S	T	G	H	020	10	DIN JIS
C= 中碳钢 M= 合金钢	S= 直齿 H= 斜齿	T= 四角棒	M= 精铣 G= 齿研	Q= 调质 H= 硬化处理	M1.5~M10	05=500mm 10=1000mm 15=1500mm 20=2000mm	DIN 5-10 JIS 1-5
C= Carbon Steel =S50C M=Alloy Steel =SCM440	S=Straight H=Helical	T=Tetragon	M=Milled G=Ground	H=Hardened Q=Quenched & Tempered			

备注：长度、钻孔、材质、表面处理（喷砂、磷酸盐、染黑、研磨）等特殊需求，皆可定制。  
Remarks: Lengths, holes, materials, surface treatments (sandblasted, phosphated, Black-coated, sides ground) and other requirements all could be customized.

## CHTGH-DIN5



系列 CHTGH-DIN5 斜齿齿研齿条  
质量等级 DIN 5

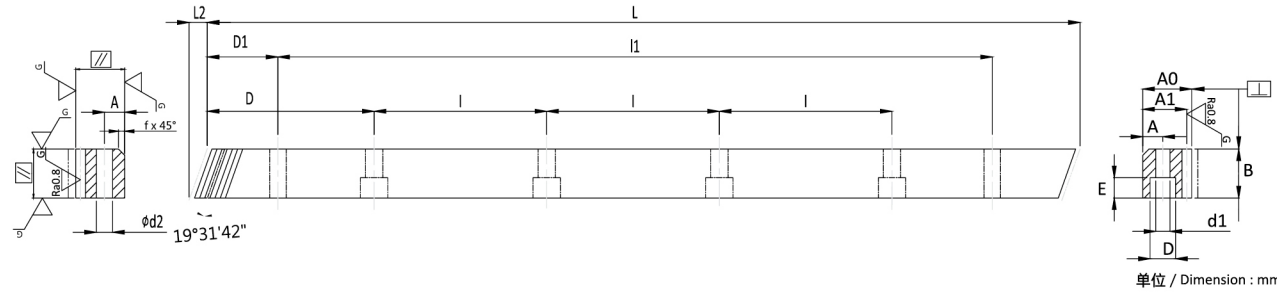
材料 S50C  
右旋角 19°31'42"  
硬度 HRC 50~55°  
硬化处理后四面研磨与齿研  
总齿距误差 :  $F_p/1000 \leq 0.026$  mm  
室温在摄氏 25° 为准

Series CHTGH-DIN5 Helical Teeth Ground Racks  
Quality Grade DIN 5

Material S50C  
Right Hand Angle 19°31'42"  
Hardness HRC 50~55°  
Ground on all sides after hardening.  
Total Pitch Error:  $F_p/1000 \leq 0.026$  mm  
Room Temperature is 25°C

型号 Code	模数 Module	L	L2	齿数 No. of Teeth	B	A0	A1	D	I	孔数 No. of Holes	A	ød1	øD	E	D1	I1	ød2	f	F <sub>ta</sub> kN	KG
CHTGH01505-DIN5	1.5	500.00	6.70	100	19	19	17.5	62.5	125	4	8	7	11	7	31.7	436.60	5.7	1.5	4.84	1.3
CHTGH01510-DIN5	1.5	1000.00	6.70	200	19	19	17.5	62.5	125	8	8	7	11	7	31.7	936.60	5.7	1.5	4.84	2.6
CHTGH02005-DIN5	2	500.00	8.50	75	24	24	22.0	62.5	125	4	8	7	11	7	31.7	436.60	5.7	2	8.15	2.1
CHTGH02010-DIN5	2	1000.00	8.50	150	24	24	22.0	62.5	125	8	8	7	11	7	31.7	936.60	5.7	2	8.15	4.1
CHTGH02505-DIN5	2.5	500.00	8.50	60	24	24	21.5	62.5	125	4	9	7	11	7	31.7	436.60	5.7	2	10.19	2.1
CHTGH02510-DIN5	2.5	1000.00	8.50	120	24	24	21.5	62.5	125	8	9	7	11	7	31.7	936.60	5.7	2	10.19	4.1
CHTGH03005-DIN5	3	500.00	10.30	50	29	29	26.0	62.5	125	4	9	10	15	9	35	430.00	7.7	2	14.77	3.0
CHTGH03010-DIN5	3	1000.00	10.30	100	29	29	26.0	62.5	125	8	9	10	15	9	35	930.00	7.7	2	14.77	6.0
CHTGH04005-DIN5	4	506.67	13.80	38	39	39	35.0	62.5	125	4	12	10	15	9	33.3	433.00	7.7	2	26.49	5.5
CHTGH04010-DIN5	4	1000.00	13.80	75	39	39	35.0	62.5	125	8	12	10	15	9	33.3	933.40	7.7	2	26.49	10.8
CHTGH05005-DIN5	5	500.00	17.40	30	49	49	34.0	62.5	125	4	12	14	20	13	37.5	425.00	11.7	3	41.60	6.8
CHTGH05010-DIN5	5	1000.00	17.40	60	49	49	34.0	62.5	125	8	12	14	20	13	37.5	925.00	11.7	3	41.60	13.6
CHTGH06005-DIN5	6	500.00	20.90	25	59	59	43.0	62.5	125	4	16	18	26	17	37.5	425.00	15.7	3	60.11	10.3
CHTGH06010-DIN5	6	1000.00	20.90	50	59	59	43.0	62.5	125	8	16	18	26	17	37.5	925.00	15.7	3	60.11	20.5
CHTGH08005-DIN5	8	480.00	28.00	18	79	79	71.0	60.0	120	4	25	22	33	21	120	240.00	19.7	4	107.31	21.3
CHTGH08010-DIN5	8	960.00	28.00	36	79	79	71.0	60.0	120	8	25	22	33	21	120	720.00	19.7	4	107.31	42.6

# CHTGH-DIN6



系列 CHTGH-DIN6 斜齿齿研齿条  
 质量等级 DIN 6

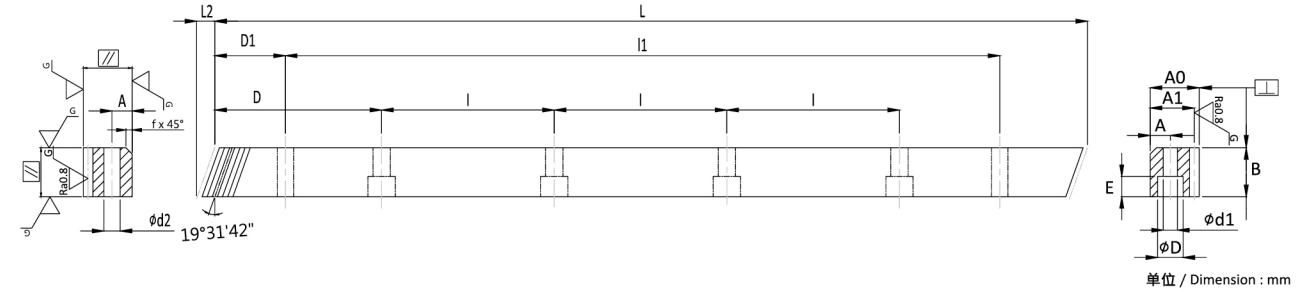
材料 S50C  
 右旋角 19°31'42"  
 硬度 HRC 50~55°  
 硬化处理后四面研磨与齿研  
 总齿距误差:  $F_p/1000 \leq 0.036 \text{ mm}$   
 $F_p/2000 \leq 0.047 \text{ mm} (\leq 0.024/1000 \text{ mm})$

Series CHTGH-DIN6 Helical Teeth Ground Racks  
 Quality Grade DIN 6

Material S50C  
 Right Hand Angle 19°31'42"  
 Hardness HRC 50~55°  
 Ground on all sides after hardening.  
 Total Pitch Error:  $F_p/1000 \leq 0.036 \text{ mm}$   
 $F_p/2000 \leq 0.047 \text{ mm} (\leq 0.024/1000 \text{ mm})$

型号 Code	模数 Module	L	L2	齿数 No. of Teeth	B	A0	A1	D	I	孔数 No. of Holes	A	φd1	φD	E	D1	I1	φd2	f	F <sub>ta</sub> kN	KG
CHTGH01505-DIN6	1.5	500.00	6.70	100	19	19	17.5	62.5	125	4	8	7	11	7	31.7	436.60	5.7	1.5	4.84	1.3
CHTGH01510-DIN6	1.5	1000.00	6.70	200	19	19	17.5	62.5	125	8	8	7	11	7	31.7	936.60	5.7	1.5	4.84	2.6
CHTGH02005-DIN6	2	500.00	8.50	75	24	24	22.0	62.5	125	4	8	7	11	7	31.7	436.60	5.7	2	8.15	2.1
CHTGH02010-DIN6	2	1000.00	8.50	150	24	24	22.0	62.5	125	8	8	7	11	7	31.7	936.60	5.7	2	8.15	4.1
CHTGH02020-DIN6	2	2000.00	8.50	300	24	24	22.0	62.5	125	16	8	7	11	7	31.7	1936.60	5.7	2	8.15	8.2
CHTGH02505-DIN6	2.5	500.00	8.50	60	24	24	21.5	62.5	125	4	9	7	11	7	31.7	436.60	5.7	2	10.19	2.1
CHTGH02510-DIN6	2.5	1000.00	8.50	120	24	24	21.5	62.5	125	8	9	7	11	7	31.7	936.60	5.7	2	10.19	4.1
CHTGH02520-DIN6	2.5	2000.00	8.50	240	24	24	21.5	62.5	125	16	9	7	11	7	31.7	1936.60	5.7	2	10.19	8.2
CHTGH03005-DIN6	3	500.00	10.30	50	29	29	26.0	62.5	125	4	9	10	15	9	35.0	430.00	7.7	2	14.77	3.0
CHTGH03010-DIN6	3	1000.00	10.30	100	29	29	26.0	62.5	125	8	9	10	15	9	35.0	930.00	7.7	2	14.77	6.0
CHTGH03020-DIN6	3	2000.00	10.30	200	29	29	26.0	62.5	125	16	9	10	15	9	35.0	1930.00	7.7	2	14.77	12.0
CHTGH04005-DIN6	4	506.67	13.80	38	39	39	35.0	62.5	125	4	12	10	15	9	33.3	433.00	7.7	2	26.49	5.5
CHTGH04010-DIN6	4	1000.00	13.80	75	39	39	35.0	62.5	125	8	12	10	15	9	33.3	933.40	7.7	2	26.49	10.8
CHTGH04020-DIN6	4	2000.00	13.80	150	39	39	35.0	62.5	125	16	12	10	15	9	33.3	1933.40	7.7	2	26.49	21.6
CHTGH05005-DIN6	5	500.00	17.40	30	49	49	34.0	62.5	125	4	12	14	20	13	37.5	425.00	11.7	3	41.60	6.8
CHTGH05010-DIN6	5	1000.00	17.40	60	49	49	34.0	62.5	125	8	12	14	20	13	37.5	925.00	11.7	3	41.60	13.6
CHTGH05020-DIN6	5	2000.00	17.40	120	49	49	34.0	62.5	125	16	12	14	20	13	37.5	1925.00	11.7	3	41.60	27.2
CHTGH06005-DIN6	6	500.00	20.90	25	59	49	43.0	62.5	125	4	16	18	26	17	37.5	425.00	15.7	3	60.11	10.3
CHTGH06010-DIN6	6	1000.00	20.90	50	59	49	43.0	62.5	125	8	16	18	26	17	37.5	925.00	15.7	3	60.11	20.5
CHTGH06020-DIN6	6	2000.00	20.90	100	59	49	43.0	62.5	125	16	16	18	26	17	37.5	1925.00	15.7	3	60.11	41.1
CHTGH08005-DIN6	8	480.00	28.00	18	79	79	71.0	60.0	120	4	25	22	33	21	120.0	240.00	19.7	4	107.31	21.3
CHTGH08010-DIN6	8	960.00	28.00	36	79	79	71.0	60.0	120	8	25	22	33	21	120.0	720.00	19.7	4	107.31	42.6
CHTGH08020-DIN6	8	1920.00	28.00	72	79	79	71.0	60.0	120	16	25	22	33	21	120.0	1680.00	19.7	4	107.31	85.1
CHTGH10005-DIN6	10	500.00	35.11	15	99	99	89.0	62.5	125	4	32	33	48	32	125.0	250.00	19.7	5	168.10	34.8
CHTGH10010-DIN6	10	1000.00	35.11	30	99	99	89.0	62.5	125	8	32	33	48	32	125.0	750.00	19.7	5	168.10	69.6

# MHTG-DIN6



系列 MHTG-DIN6 斜齿齿研齿条  
 质量等级 DIN 6

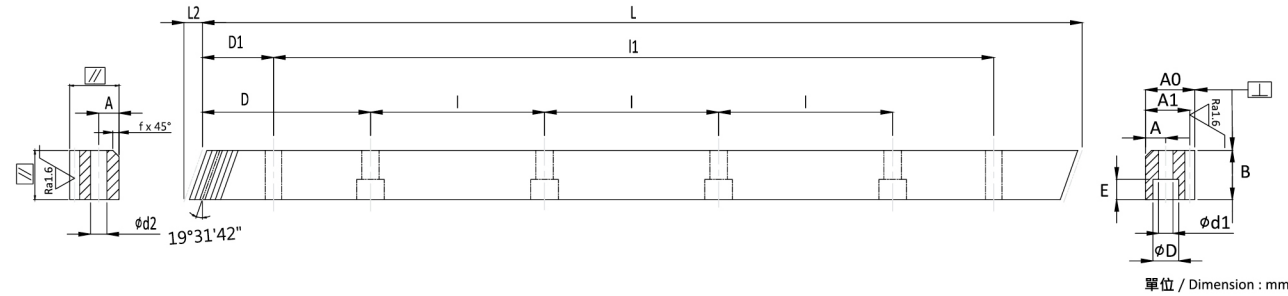
材料 SCM440  
 右旋角 19°31'42"  
 硬度 HRC 10~12°  
 四面研磨与齿研  
 总齿距误差:  $F_p/1000 \leq 0.036 \text{ mm}$   
 $F_p/2000 \leq 0.047 \text{ mm} (\leq 0.024/1000 \text{ mm})$

Series MHTG-DIN6 Helical Teeth Ground Racks  
 Quality Grade DIN 6

Material SCM440  
 Right Hand Angle 19°31'42"  
 Hardness HRC 10~12°  
 Ground on all sides.  
 Total Pitch Error:  $F_p/1000 \leq 0.036 \text{ mm}$   
 $F_p/2000 \leq 0.047 \text{ mm} (\leq 0.024/1000 \text{ mm})$

型号 Code	模数 Module	L	L2	齿数 No. of Teeth	B	A0	A1	D	I	孔数 No. of Holes	A	φd1	φD	E	D1	I1	φd2	f	F <sub>ta</sub> kN	KG
MHTG01505-DIN6	1.5	500.00	6.70	100	19	19	17.5	62.5	125	4	8	7	11	7	31.7	436.60	5.7	1.5	0.94	1.3
MHTG01510-DIN6	1.5	1000.00	6.70	200	19	19	17.5	62.5	125	8	8	7	11	7	31.7	936.60	5.7	1.5	0.94	2.6
MHTG02005-DIN6	2	500.00	8.50	75	24	24	22.0	62.5	125	4	8	7	11	7	31.7	436.60	5.7	2	1.58	2.1
MHTG02010-DIN6	2	1000.00	8.50	150	24	24	22.0	62.5	125	8	8	7	11	7	31.7	936.60	5.7	2	1.58	4.1
MHTG02020-DIN6	2	2000.00	8.50	300	24	24	22.0	62.5	125	16	8	7	11	7	31.7	1936.60	5.7	2	1.58	8.2
MHTG02505-DIN6	2.5	500.00	8.50	60	24	24	21.5	62.5	125	4	9	7	11	7	31.7	436.60	5.7	2	1.98	2.1
MHTG02510-DIN6	2.5	1000.00	8.50	120	24	24	21.5	62.5	125	8	9	7	11	7	31.7	936.60	5.7	2	1.98	4.1
MHTG02520-DIN6	2.5	2000.00	8.50	240	24	24	21.5	62.5	125	16	9	7	11	7	31.7	1936.60	5.7	2	1.98	8.2
MHTG03005-DIN6	3	500.00	10.30	50	29	29	26.0	62.5	125	4	9	10	15	9	35.0	430.00	7.7	2	2.87	3.0
MHTG03010-DIN6	3	1000.00	10.30	100	29	29	26.0	62.5	125	8	9	10	15	9	35.0	930.00	7.7	2	2.87	6.0
MHTG03020-DIN6	3	2000.00	10.30	200	29	29	26.0	62.5	125	16	9	10	15	9	35.0	1930.00	7.7	2	2.87	12.0
MHTG04005-DIN6	4	506.67	13.80	38	39	39	35.0	62.5	125	4	12	10	15	9	33.3	433.00	7.7	2	5.15	5.5
MHTG04010-DIN6	4	1000.00	13.80	75	39	39	35.0	62.5	125	8	12	10	15	9	33.3	933.40	7.7	2	5.15	10.8
MHTG04020-DIN6	4	2000.00	13.80	150	39	39	35.0	62.5	125	16	12	10	15	9	33.3	1933.40	7.7	2	5.15	21.6
MHTG05005-DIN6	5	500.00	17.40	30	49	49	34.0	62.5	125	4	12	14	20	13	37.5	425.00	11.7	3	8.08	6.8
MHTG05010-DIN6	5	1000.00	17.40	60	49	49	34.0	62.5	125	8	12	14	20	13	37.5	925.00	11.7	3	8.08	13.6
MHTG05020-DIN6	5	2000.00	17.40	120	49	49	34.0	62.5	125	16	12	14	20	13	37.5	1925.00	11.7	3	8.08	27.2
MHTG06005-DIN6	6	500.00	20.90	25	59	49	43.0	62.5	125	4	16	18	26	17	37.5	425.00	15.7	3	11.68	10.3
MHTG06010-DIN6	6	1000.00	20.90	50	59	49	43.0	62.5	125	8	16	18	26	17	37.5	925.00	15.7	3	11.68	20.5
MHTG06020-DIN6	6	2000.00	20.90	100	59	49	43.0	62.5	125	16	16	18	26	17	37.5	1925.00	15.7	3	11.68	41.1
MHTG08005-DIN6	8	480.00	28.00	18	79	79	71.0	60.0	120	4	25	22	33	21	120.0	240.00	19.7	4	20.85	21.3
MHTG08010-DIN6	8	960.00	28.00	36	79	79	71.0	60.0	120	8	25	22	33	21	120.0	720.00	19.7	4	20.85	42.6
MHTG08020-DIN6	8	1920.00	28.00	72	79	79	71.0	60.0	120	16	25	22	33	21	120.0	1680.00	19.7	4	20.85	85.1

# CHTM-DIN8



系列 CHTM-DIN8 斜齿精铣齿条  
 质量等级 DIN 8

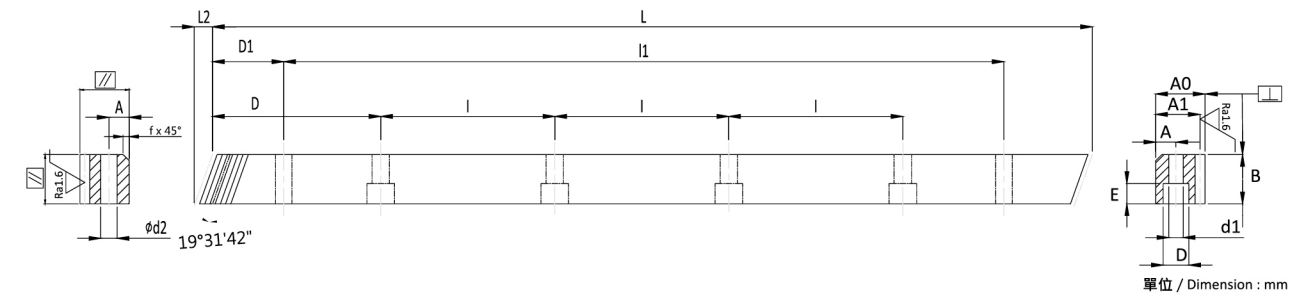
材料 S50C  
 右旋角 19°31'42"  
 硬度 HRC 10~12°  
 总齿距误差  $F_p/1000 \leq 0.060$  mm  
 $F_p/2000 \leq 0.080$  mm

Series CHTM-DIN8 Helical Milled Racks  
 Quality Grade DIN 8

Material S50C  
 Right Hand Angle 19°31'42"  
 Hardness: HRC 10~12°  
 Total Pitch Error:  $F_p/1000 \leq 0.060$  mm  
 $F_p/2000 \leq 0.080$  mm

型号 Code	模数 Module	L	L2	齿数 No. of Teeth	B	A0	A1	D	I	孔数 No. of Holes	A	φd1	φD	E	D1	I1	φd2	f	F <sub>ta</sub> kN	KG
CHTM01510-DIN8	1.5	1000	6.00	200	17	17	15.5	62.5	125	8	7	6	9.5	6	31.7	936.6	5.70	1.5	0.64	2.1
CHTM02010-DIN8	2	1000	8.90	150	25	24	22	62.5	125	8	8	7	11	7	31.7	936.6	5.70	2	1.25	4.3
CHTM02020-DIN8	2	2000	8.90	300	25	24	22	62.5	125	16	8	7	11	7	31.7	1936.6	5.70	2	1.25	8.5
CHTM03010-DIN8	3	1000	10.60	100	30	29	26	62.5	125	8	9	10	15	9	35.0	930.0	7.70	2	2.24	6.2
CHTM03020-DIN8	3	2000	10.60	200	30	29	26	62.5	125	16	9	10	15	9	35.0	1930.0	7.70	2	2.24	12.4
CHTM04010-DIN8	4	1000	14.20	75	40	39	35	62.5	125	8	12	10	15	9	33.3	933.4	7.70	2	3.99	11.1
CHTM04020-DIN8	4	2000	14.20	150	40	39	35	62.5	125	16	12	10	15	9	33.3	1933.4	7.70	2	3.99	22.2
CHTM05010-DIN8	5	1000	17.40	60	49	39	34	62.5	125	8	12	14	20	13	37.5	925.0	11.70	3	6.11	13.6
CHTM05020-DIN8	5	2000	17.40	120	49	39	34	62.5	125	16	12	14	20	13	37.5	1925.0	11.70	3	6.11	27.2
CHTM06010-DIN8	6	1000	20.90	50	59	49	43	62.5	125	8	16	18	26	17	37.5	925.0	15.70	3	8.83	20.5
CHTM06020-DIN8	6	2000	20.90	100	59	49	43	62.5	125	16	16	18	26	17	37.5	1925.0	15.70	3	8.83	41.1
CHTM08010-DIN8	8	960	28.00	36	79	79	71	60	120	8	25	22	33	21	120.0	720.0	19.70	4	15.76	42.6
CHTM08020-DIN8	8	1920	28.00	72	79	79	71	60	120	16	25	22	33	21	120.0	1680.0	19.70	4	15.76	85.1
CHTM10010-DIN8	10	1000	35.11	30	99	99	89	62.5	125	8	32	33	48	32	125.0	750.0	19.70	5	24.69	69.6

# CHTMQ-DIN8



系列 CHTMQ-DIN8 斜齿精铣调质齿条  
 质量等级 DIN 8

材料 S50C  
 右旋角 19°31'42"  
 硬度 HRC 18~22°  
 总齿距误差  $F_p/1000 \leq 0.060$  mm  
 $F_p/2000 \leq 0.080$  mm

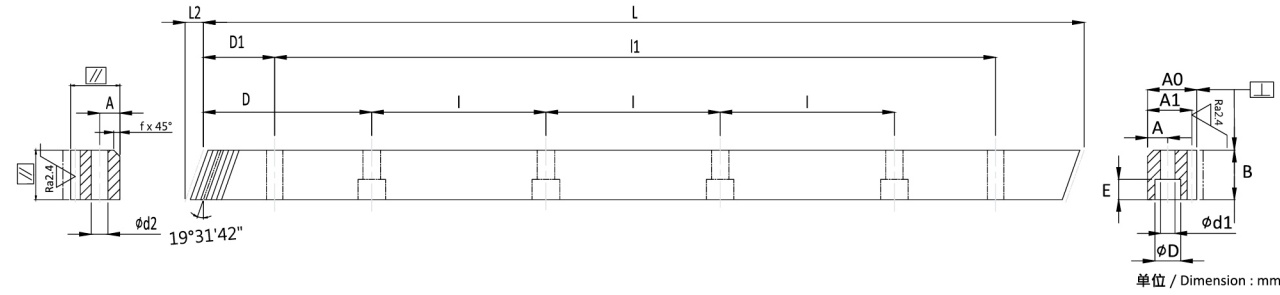
Series CHTMQ-DIN8 Helical Milled Quenched & Tempered Racks  
 Quality Grade DIN 8

Material S50C  
 Right Hand Angle 19°31'42"  
 Hardness: HRC 18~22°  
 Total Pitch Error:  $F_p/1000 \leq 0.060$  mm  
 $F_p/2000 \leq 0.080$  mm

型号 Code	模数 Module	L	L2	齿数 No. of Teeth	B	A0	A1	D	I	孔数 No. of Holes	A	φd1	φD	E	D1	I1	φd2	f	F <sub>ta</sub> kN	KG
CHTMQ01510-DIN8	1.5	1000	6.00	200	17	17	15.5	62.5	125	8	7	6	9.5	7	31.7	936.6	5.7	1.5	0.88	2.1
CHTMQ02010-DIN8	2	1000	8.90	150	25	24	22	62.5	125	8	8	7	11	7	31.7	936.6	5.7	2	1.73	4.3
CHTMQ02020-DIN8	2	2000	8.90	300	25	24	22	62.5	125	16	8	7	11	7	31.7	1936.6	5.7	2	1.73	8.5
CHTMQ03010-DIN8	3	1000	10.60	100	30	29	26	62.5	125	8	9	10	15	9	35.0	930.0	7.7	2	3.11	6.2
CHTMQ03020-DIN8	3	2000	10.60	200	30	29	26	62.5	125	16	9	10	15	9	35.0	1930.0	7.7	2	3.11	12.4
CHTMQ04010-DIN8	4	1000	14.20	75	40	39	35	62.5	125	8	12	10	15	9	33.3	933.4	7.7	2	5.52	11.1
CHTMQ04020-DIN8	4	2000	14.20	150	40	39	35	62.5	125	16	12	10	15	9	33.3	1933.4	7.7	2	5.52	22.2
CHTMQ05010-DIN8	5	1000	17.40	60	49	39	34	62.5	125	8	12	14	20	13	37.5	925.0	11.7	3	8.46	13.6
CHTMQ05020-DIN8	5	2000	17.40	120	49	39	34	62.5	125	16	12	14	20	13	37.5	1925.0	11.7	3	8.46	27.2
CHTMQ06010-DIN8	6	1000	20.90	50	59	49	43	62.5	125	8	16	18	26	17	37.5	925.0	15.7	3	12.22	20.5
CHTMQ06020-DIN8	6	2000	20.90	100	59	49	43	62.5	125	16	16	18	26	17	37.5	1925.0	15.7	3	12.22	41.1
CHTMQ08010-DIN8	8	960	28.00	36	79	79	71	60	120	8	25	22	33	21	120.0	720.0	19.7	4	21.81	42.6
CHTMQ08020-DIN8	8	1920	28.00	72	79	79	71	60	120	16	25	22	33	21	120.0	1680.0	19.7	4	21.81	85.1
CHTMQ10010-DIN8	10	1000	35.11	30	99	99	89	62.5	125	8	32	33	48	32	125.0	750.0	19.7	5	34.17	69.6

斜齿热处理齿条

# CHTMH-DIN10



系列 CHTMH-DIN10 斜齿热处理齿条  
 质量等级 DIN 10

材料 S50C  
 右旋角 19°31'42"  
 硬度 HRC 50~55°  
 表面 喷砂处理  
 总齿距误差:  $F_p/1000 \leq 0.15$  mm

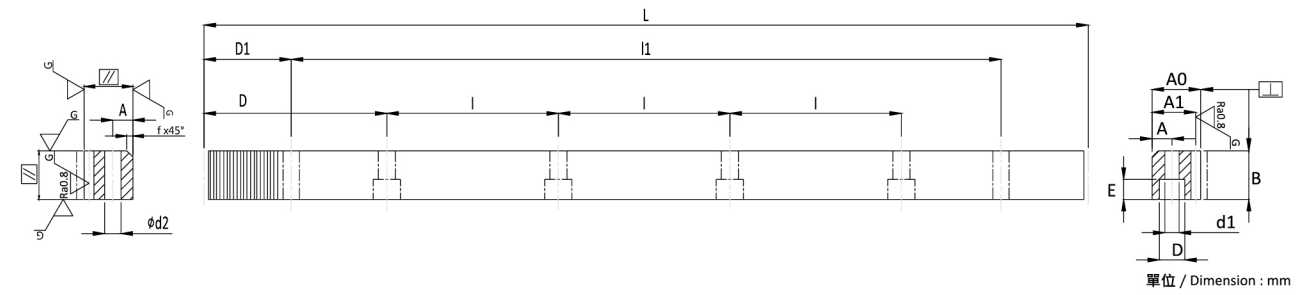
Series CHTMH-DIN 10 Helical Hardened Racks  
 Quality Grade DIN 10

Material S50C  
 Right Hand Angle 19°31'42"  
 Hardness: HRC 50~55°  
 Surfaces: Sand-blasted.  
 Total Pitch Error:  $F_p/1000 \leq 0.15$  mm

型号 Code	模数 Module	L	L2	齿数 No. of Teeth	B	A0	A1	D	I	孔数 No. of Holes	A	φd1	φD	E	D1	I1	φd2	f	F <sub>ta</sub> kN	KG
CHTMH01510-DIN10	1.5	1000	6.00	200	17	17	15.5	62.5	125	8	7	6	9.5	7	31.7	936.6	5.7	1.5	3.18	2.1
CHTMH02010-DIN10	2	1000	8.50	150	24	24	22	62.5	125	8	8	7	11	7	31.7	936.6	5.7	2	5.98	4.1
CHTMH02020-DIN10	2	2000	8.50	300	24	24	22	62.5	125	16	8	7	11	7	31.7	1936.6	5.7	2	5.98	8.2
CHTMH03010-DIN10	3	1000	10.30	100	29	29	26	62.5	125	8	9	10	15	9	35.0	930.0	7.7	2	10.83	6.0
CHTMH03020-DIN10	3	2000	10.30	200	29	29	26	62.5	125	16	9	10	15	9	35.0	1930.0	7.7	2	10.83	12.0
CHTMH04010-DIN10	4	1000	13.80	75	39	39	35	62.5	125	8	12	10	15	9	33.3	933.4	7.7	2	19.42	10.8
CHTMH04020-DIN10	4	2000	13.80	150	39	39	35	62.5	125	16	12	10	15	9	33.3	1933.4	7.7	2	19.42	21.6
CHTMH05010-DIN10	5	1000	17.40	60	49	39	34	62.5	125	8	12	14	20	13	37.5	925.0	11.7	3	30.51	13.6
CHTMH05020-DIN10	5	2000	17.40	120	49	39	34	62.5	125	16	12	14	20	13	37.5	1925.0	11.7	3	30.51	27.2
CHTMH06010-DIN10	6	1000	20.90	50	59	49	43	62.5	125	8	16	18	26	17	37.5	925.0	15.7	3	44.08	20.5
CHTMH06020-DIN10	6	2000	20.90	100	59	49	43	62.5	125	16	16	18	26	17	37.5	1925.0	15.7	3	44.08	41.1
CHTMH08010-DIN10	8	960	28.00	36	79	79	71	60	120	8	25	22	33	21	120.0	720.0	19.7	4	78.69	42.6
CHTMH08020-DIN10	8	1920	28.00	72	79	79	71	60	120	16	25	22	33	21	120.0	1680.0	19.7	4	78.69	85.1
CHTMH10010-DIN10	10	1000	35.11	30	99	99	89	62.5	125	8	32	33	48	32	125.0	750.0	19.7	5	123.27	69.6

直齿齿研齿条

# CSTGH-DIN5



系列 CSTGH-DIN5 直齿齿研齿条  
 质量等级 DIN 5

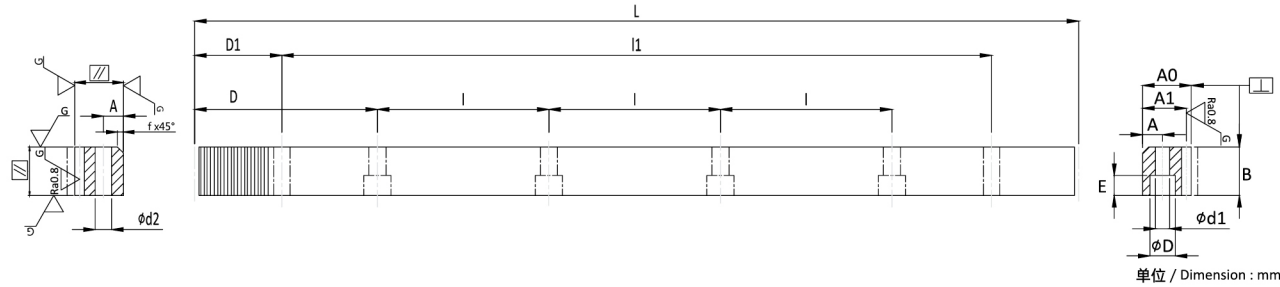
材料 S50C  
 硬度 HRC 50~55°  
 硬化处理后四面研磨与齿研  
 总齿距误差:  $F_p/1000 \leq 0.026$  mm  
 室温在摄氏 25° 为准

Series CSTGH-DIN5 Straight Teeth Ground Racks  
 Quality Grade DIN 5

Material S50C  
 Hardness: HRC 50~55°  
 Ground on all sides after hardening.  
 Total Pitch Error:  $F_p/1000 \leq 0.026$  mm  
 Room Temperature is 25°C

型号 Code	模数 Module	L	齿数 No. of Teeth	B	A0	A1	D	I	孔数 No. of Holes	A	φd1	φD	E	D1	I1	φd2	f	F <sub>ta</sub> kN	KG
CSTGH02010-DIN5	2	1005.31	160	24	24	22	62.83	125.66	8	8	7	11	7	31.3	942.70	5.7	2	5.69	4.1
CSTGH03010-DIN5	3	1017.88	108	29	29	26	63.61	127.23	8	9	10	11	9	34.4	949.10	7.7	2	10.32	6.1
CSTGH04010-DIN5	4	1005.31	80	39	39	35	62.83	125.66	8	12	10	15	9	37.5	930.30	7.7	2	18.50	10.9
CSTGH05010-DIN5	5	1005.31	64	49	39	34	62.83	125.66	8	12	14	17	13	37.5	945.00	11.7	3	29.06	17.2

## CSTGH-DIN6



系列 CSTGH-DIN6 直齿齿研齿条  
质量等级 DIN 6

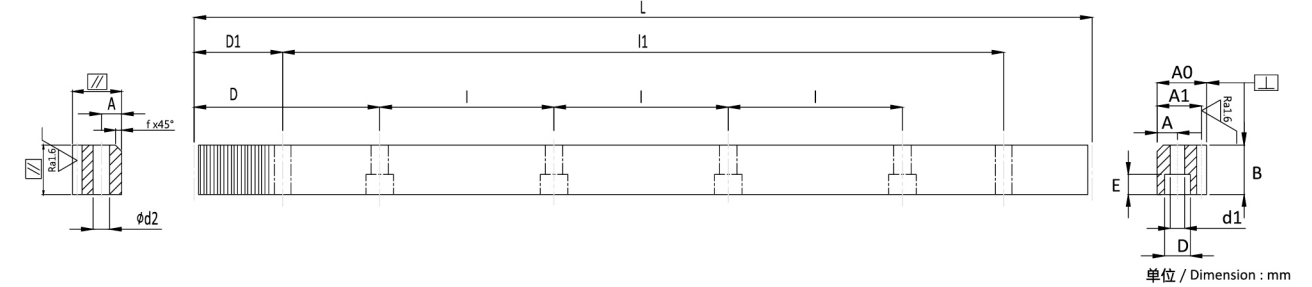
材料 S50C  
硬度 HRC 50~55°  
硬化处理后四面研磨与齿研  
总齿距误差:  $F_p/1000 \leq 0.036$  mm  
 $F_p/2000 \leq 0.047$  mm ( $\leq 0.024/1000$  mm)

Series CSTGH-DIN6 Straight Teeth Ground Racks  
Quality Grade DIN 6

Material S50C  
Hardness: HRC 50~55°  
Ground on all sides after hardening.  
Total Pitch Error:  $F_p/1000 \leq 0.036$  mm  
 $F_p/2000 \leq 0.047$  mm ( $\leq 0.024/1000$  mm)

型号 Code	模数 Module	L	齿数 No. of Teeth	B	A0	A1	D	l	孔数 No. of Holes	A	φd1	φD	E	D1	l1	φd2	f	F <sub>ta</sub> kN	KG
CSTGH01505-DIN6	1.5	499.51	106	19	19	17.5	62.44	124.88	4	8	6	9.5	7	29.0	441.50	5.7	1.5	3.38	1.3
CSTGH01510-DIN6	1.5	999.03	212	19	19	17.5	62.44	124.88	8	8	6	9.5	7	29.0	941.00	5.7	1.5	3.38	2.6
CSTGH02005-DIN6	2	502.65	80	24	24	22	62.83	125.66	4	8	7	11	7	31.3	440.10	5.7	2	5.69	2.1
CSTGH02010-DIN6	2	1005.31	160	24	24	22	62.83	125.66	8	8	7	11	7	31.3	942.70	5.7	2	5.69	4.1
CSTGH02020-DIN6	2	2010.62	320	24	24	22	62.83	125.66	16	8	7	11	7	31.3	1948.00	5.7	2	5.69	8.2
CSTGH02505-DIN6	2.5	502.65	64	24	24	21.5	62.83	125.66	4	9	7	11	7	31.3	440.10	5.7	2	7.12	2.1
CSTGH02510-DIN6	2.5	1005.31	128	24	24	21.5	62.83	125.66	8	9	7	11	7	31.3	942.70	5.7	2	7.12	4.1
CSTGH02520-DIN6	2.5	2010.62	256	24	24	21.5	62.83	125.66	16	9	7	11	7	31.3	1948.00	5.7	2	7.12	8.2
CSTGH03005-DIN6	3	508.94	54	29	29	26	63.62	127.23	4	9	10	15	9	34.4	440.10	7.7	2	10.32	3.0
CSTGH03010-DIN6	3	1017.88	108	29	29	26	63.62	127.23	8	9	10	15	9	34.4	949.10	7.7	2	10.32	6.1
CSTGH03020-DIN6	3	2035.75	216	29	29	26	63.62	127.23	16	9	10	15	9	34.4	1967.00	7.7	2	10.32	12.2
CSTGH04005-DIN6	4	502.65	40	39	39	35	62.83	125.66	4	12	10	15	9	37.5	427.70	7.7	2	18.50	5.4
CSTGH04010-DIN6	4	1005.31	80	39	39	35	62.83	125.66	8	12	10	15	9	37.5	930.30	7.7	2	18.50	10.9
CSTGH04020-DIN6	4	2010.62	160	39	39	35	62.83	125.66	16	12	10	15	9	37.5	1935.60	7.7	2	18.50	21.7
CSTGH05005-DIN6	5	502.65	32	49	49	34	62.83	125.66	4	12	14	20	13	30.1	442.30	11.7	3	29.06	6.8
CSTGH05010-DIN6	5	1005.31	64	49	49	34	62.83	125.66	8	12	14	20	13	30.1	945.00	11.7	3	29.06	13.7
CSTGH05020-DIN6	5	2010.62	128	49	49	34	62.83	125.66	16	12	14	20	13	30.1	1950.40	11.7	3	29.06	27.3
CSTGH06005-DIN6	6	508.94	27	59	49	43	63.62	127.23	4	16	18	26	17	31.4	446.10	15.7	3	41.99	10.5
CSTGH06010-DIN6	6	1017.88	54	59	49	43	63.62	127.23	8	16	18	26	17	31.4	955.00	15.7	3	41.99	20.9
CSTGH06020-DIN6	6	2035.75	108	59	49	43	63.62	127.23	16	16	18	26	17	31.4	1973.00	15.7	3	41.99	41.8
CSTGH08005-DIN6	8	502.65	20	79	79	71	62.83	125.66	4	25	22	33	21	26.6	449.45	19.7	4	74.96	22.3
CSTGH08005-DIN6	8	1005.31	40	79	79	71	62.83	125.66	8	25	22	33	21	26.6	952.00	19.7	4	74.96	44.6
CSTGH08020-DIN6	8	2010.61	80	79	79	71	62.83	125.66	16	25	22	33	21	26.6	1957.40	19.7	4	74.96	89.1

## CSTM-DIN8



系列 CSTM-DIN8 直齿精铣齿条  
质量等级 DIN 8

材料 S50C  
硬度 HRC 10~12°  
总齿距误差:  $F_p/1000 \leq 0.060$  mm  
 $F_p/2000 \leq 0.080$  mm

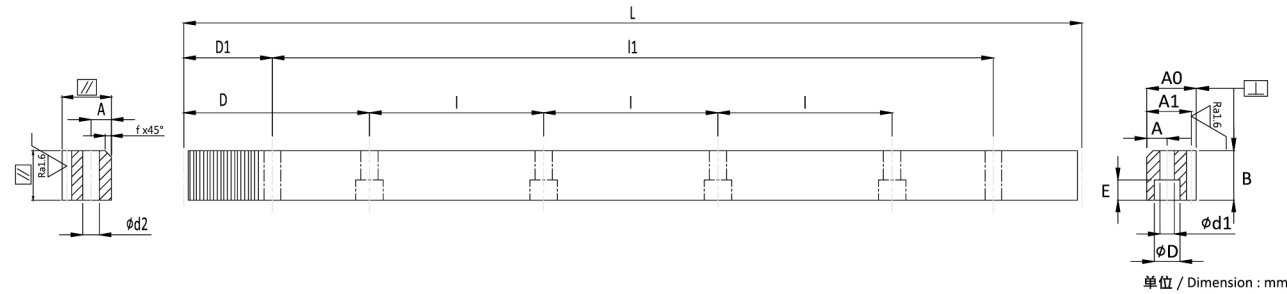
Series CSTM-DIN8 Straight Milled Racks  
Quality Grade DIN 8

Material S50C  
Hardness: HRC 10~12°  
Total Pitch Error:  $F_p/1000 \leq 0.060$  mm  
 $F_p/2000 \leq 0.080$  mm

型号 Code	模数 Module	L	齿数 No. of Teeth	B	A0	A1	D	l	孔数 No. of Holes	A	φd1	φD	E	D1	l1	φd2	f	F <sub>ta</sub> kN	KG
CSTM01510-DIN8	1.5	999.03	212	17	17	15.5	62.44	124.88	8	7	6	9.5	7	29	941.00	5.7	1.5	0.35	1.9
CSTM02010-DIN8	2	1005.31	160	25	24	22	62.83	125.66	8	8	7	11	7	31.3	942.70	5.7	2	0.68	4.1
CSTM02020-DIN8	2	2010.62	320	25	24	22	62.83	125.66	16	8	7	11	7	31.3	1948.00	5.7	2	0.68	8.1
CSTM03010-DIN8	3	1017.88	108	30	29	26	63.62	127.23	8	9	10	15	9	34.4	949.10	7.7	2	1.22	5.9
CSTM03020-DIN8	3	2035.75	216	30	29	26	63.62	127.23	16	9	10	15	9	34.4	1967.00	7.7	2	1.22	11.9
CSTM04010-DIN8	4	1005.31	80	40	39	35	62.83	125.66	8	12	10	15	9	37.5	930.30	7.7	2	2.18	10.5
CSTM04020-DIN8	4	2010.62	160	40	39	35	62.83	125.66	16	12	10	15	9	37.5	1935.60	7.7	2	2.18	21.0
CSTM05010-DIN8	5	1005.31	64	49	39	34	62.83	125.66	8	12	14	20	13	30.1	945.00	11.7	3	3.33	12.9
CSTM05020-DIN8	5	2010.62	128	49	39	34	62.83	125.66	16	12	14	20	13	30.1	1950.40	11.7	3	3.33	25.8
CSTM06010-DIN8	6	1017.88	54	59	49	43	63.62	127.23	8	16	18	26	17	31.4	955.00	15.7	3	4.82	19.7
CSTM06020-DIN8	6	2035.75	108	59	49	43	63.62	127.23	16	16	18	26	17	31.4	1973.00	15.7	3	4.82	39.5
CSTM08010-DIN8	8	1005.31	40	79	79	71	62.83	125.66	8	25	22	33	21	26.6	952.00	19.7	4	8.60	42.1
CSTM08020-DIN8	8	2010.61	80	79	79	71	62.83	125.66	16	25	22	33	21	26.6	1957.40	19.7	4	8.60	84.2
CSTM10010-DIN8	10	1005.31	32	99	99	89	62.83	125.66	8	32	33	48	32	125.67	754.00	19.7	5	13.47	66.1

直齿精铣调质齿条

# CSTMQ-DIN8



系列 CSTMQ-DIN8 直齿精铣调质齿条  
 质量等级 DIN 8

材料 S50C  
 硬度 HRC 18~22°  
 总齿距误差:  $F_p/1000 \leq 0.060$  mm  
 $F_p/2000 \leq 0.080$  mm

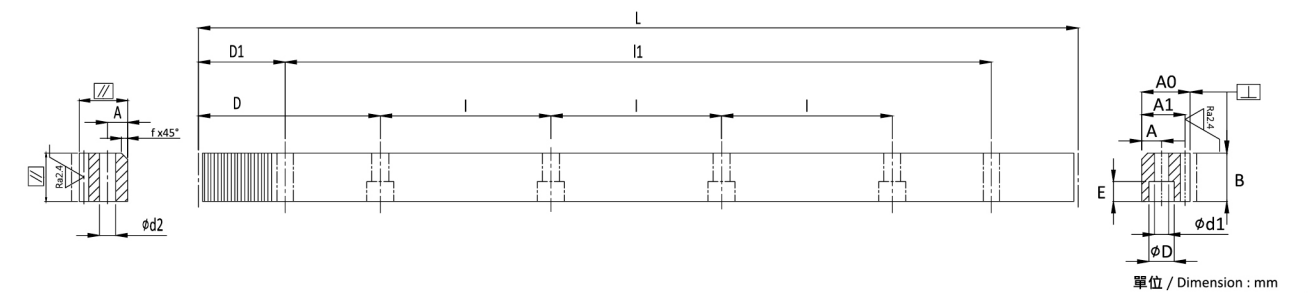
Series CSTMQ-DIN8 Straight Milled Quenched & Tempered Racks  
 Quality Grade DIN 8

Material S50C  
 Hardness: HRC 18~22°  
 Total Pitch Error:  $F_p/1000 \leq 0.060$  mm  
 $F_p/2000 \leq 0.080$  mm

型号 Code	模数 Module	L	齿数 No. of Teeth	B	A0	A1	D	l	孔数 No. of Holes	A	φd1	φD	E	D1	l1	φd2	f	F <sub>ta</sub> kN	KG
CSTMQ01510-DIN8	1.5	999.03	212	17	17	15.5	62.44	124.88	8	7	6	9.5	7	29	941.00	5.7	1.5	0.48	1.9
CSTMQ02010-DIN8	2	1005.31	160	25	24	22	62.83	125.66	8	8	7	11	7	31.3	942.70	5.7	2	0.94	4.1
CSTMQ02020-DIN8	2	2010.62	320	25	24	22	62.83	125.66	16	8	7	11	7	31.3	1948.00	5.7	2	0.94	8.1
CSTMQ03010-DIN8	3	1017.88	108	30	29	26	63.62	127.23	8	9	10	15	9	34.4	949.10	7.7	2	1.70	5.9
CSTMQ03020-DIN8	3	2035.75	216	30	29	26	63.62	127.23	16	9	10	15	9	34.4	1967.00	7.7	2	1.70	11.9
CSTMQ04010-DIN8	4	1005.31	80	40	39	35	62.83	125.66	8	12	10	15	9	37.5	930.30	7.7	2	3.01	10.5
CSTMQ04020-DIN8	4	2010.62	160	40	39	35	62.83	125.66	16	12	10	15	9	37.5	1935.60	7.7	2	3.01	21.0
CSTMQ05010-DIN8	5	1005.31	64	49	39	34	62.83	125.66	8	12	14	20	13	30.1	945.00	11.7	3	4.61	12.9
CSTMQ05020-DIN8	5	2010.62	128	49	39	34	62.83	125.66	16	12	14	20	13	30.1	1950.40	11.7	3	4.61	25.8
CSTMQ06010-DIN8	6	1017.88	54	59	49	43	63.62	127.23	8	16	18	26	17	31.4	955.00	15.7	3	6.67	19.7
CSTMQ06020-DIN8	6	2035.75	108	59	49	43	63.62	127.23	16	16	18	26	17	31.4	1973.00	15.7	3	6.67	39.5
CSTMQ08010-DIN8	8	1005.31	40	79	79	71	62.83	125.66	8	25	22	33	21	26.6	952.00	19.7	4	11.90	42.1
CSTMQ08020-DIN8	8	2010.61	80	79	79	71	62.83	125.66	16	25	22	33	21	26.6	1957.30	19.7	4	11.90	84.2
CSTMQ10010-DIN8	10	1005.31	32	99	99	89	62.83	125.66	8	32	33	48	32	125.67	753.96	19.7	5	18.65	66.1

直齿硬化齿条

# CSTMH-DIN10



系列 CSTMH-DIN10 直齿硬化齿条  
 质量等级 DIN 10

材料 S50C  
 硬度 HRC 50~55°  
 表面 喷砂或磷酸盐处理  
 总齿距误差 :  $F_p/1000 \leq 0.1$  mm

Series CSTMH-DIN10 Straight Hardened Racks  
 Quality Grade DIN 10

Material S50C  
 Hardness: HRC 50~55°  
 Surfaces: Sand-blasted or phosphated.  
 Total Pitch Error:  $F_p/1000 \leq 0.1$  mm

型号 Code	模数 Module	L	齿数 No. of Teeth	B	A0	A1	D	l	孔数 No. of Holes	A	φd1	φD	E	D1	l1	φd2	f	F <sub>ta</sub> kN	KG
CSTMH01510-DIN10	1.5	999.03	212	17	17	15.5	62.44	124.88	8	7	6	9.5	7	29	941.00	5.7	1.5	1.98	1.9
CSTMH02010-DIN10	2	1005.31	160	24	24	22	62.83	125.66	8	8	7	11	7	31.3	942.70	5.7	2	3.73	3.9
CSTMH02020-DIN10	2	2010.62	320	24	24	22	62.83	125.66	16	8	7	11	7	31.3	1948.00	5.7	2	3.73	7.8
CSTMH03010-DIN10	3	1017.88	108	29	29	26	63.62	127.23	8	9	10	15	9	34.4	949.10	7.7	2	6.76	5.8
CSTMH03020-DIN10	3	2035.75	216	29	29	26	63.62	127.23	16	9	10	15	9	34.4	1967.00	7.7	2	6.76	11.5
CSTMH04010-DIN10	4	1005.31	80	39	39	35	62.83	125.66	8	12	10	15	9	37.5	930.30	7.7	2	12.12	10.3
CSTMH04020-DIN10	4	2010.62	160	39	39	35	62.83	125.66	16	12	10	15	9	37.5	1935.60	7.7	2	12.12	20.5
CSTMH05010-DIN10	5	1005.31	64	49	39	34	62.83	125.66	8	12	14	20	13	30.1	945.00	11.7	3	19.04	12.9
CSTMH05020-DIN10	5	2010.62	128	49	39	34	62.83	125.66	16	12	14	20	13	30.1	1950.30	11.7	3	19.04	25.8
CSTMH06010-DIN10	6	1017.88	54	59	49	43	63.62	127.23	8	16	18	26	17	31.4	955.00	15.7	3	27.51	19.7
CSTMH06020-DIN10	6	2035.75	108	59	49	43	63.62	127.23	16	16	18	26	17	31.4	1973.00	15.7	3	27.51	39.5
CSTMH08010-DIN10	8	1005.31	40	79	79	71	62.83	125.66	8	25	22	33	21	26.6	952.00	19.7	4	49.11	42.1
CSTMH10010-DIN10	10	1005.31	32	99	99	89	62.83	125.66	8	32	33	48	32	125.7	753.96	19.7	4	76.93	66.1