

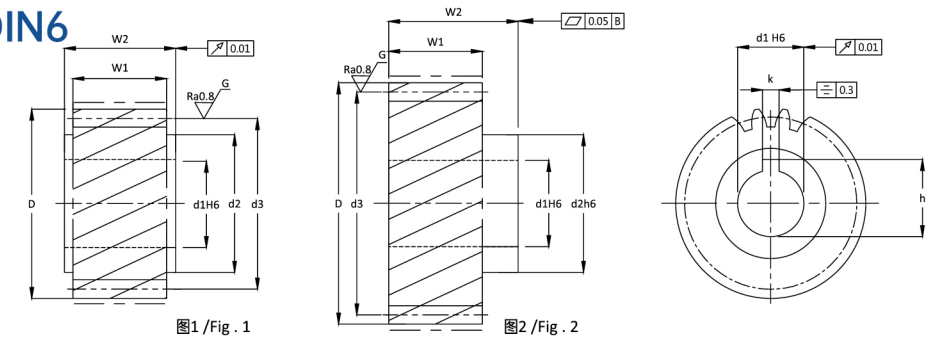
齿轮型号说明



1st	2nd	3rd	4th	5th	6th	7th	8th	9th	10th
材料 Material	齿型 Type	系列 Series	齿面处理 Teeth Treatment	硬度处理 Hardness	模数 Module 周节 Circular Pitch	齿数 No. of Teeth	序号 Series	图号 Fig	等级 Grade
C	S	(F)	G	H	020	030	1	1	DIN JIS
C= 中碳钢 M= 合金钢	S= 直齿 H= 斜齿	F= 法兰式	G=齿研 S= 磨削 M= 精铣	H= 硬化处理	M1.5~M10 CP5-CP20	12~120	1~11	1, 2	DI N 6-10 JIS 2-4
C= Carbon Steel =S45C =S50C M= Alloy Steel =SCM440 =SCM415	S= Straight H= Helical	F= Flange	G= Ground S= Skiving M= Milled	H= Hardened High Frequency Carburized.					

斜齿齿研齿轮

MHGH-DIN6



单位 / Dimension : mm

系列 MHGH-DIN6 斜齿齿研齿轮
 质量等级 DIN 6

Series MHGH-DIN6 Helical Teeth Ground Pinions
 Quality Grade DIN 6

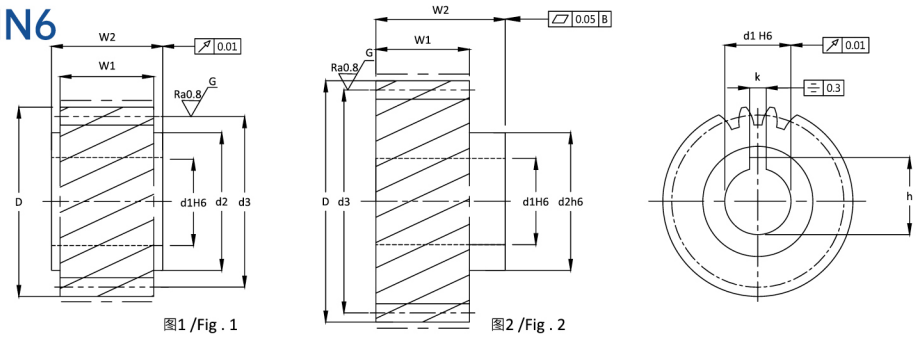
材料 SCM415/SCM440
 左旋角 19°31'42"
 硬度 HRC 50~55°
 硬化处理后齿面研磨

Material SCM415/SCM440
 Left Hand Angle 19°31'42"
 Hardness: HRC 50~55°
 Teeth Ground after Hardening

型号 Code	图 Fig.	DIN	齿数 No. of Teeth	d1	d2	d3	D	W1	W2	k	h	F _{ta} kN	KG
模数 1.5 / Module 1.5													
MHGH0150201	1	-DIN6	20	11	25	31.83	34.83	20	22	4	12.8	4.48	0.10
MHGH0150202	1	-DIN6	20	13	25	31.83	34.83	20	22	5	15.3	4.48	0.10
MHGH0150203	1	-DIN6	20	14	25	31.83	34.83	20	22	5	16.3	4.48	0.10
MHGH0150204	1	-DIN6	20	16	25	31.83	34.83	20	22	5	18.3	4.48	0.10
MHGH0150205	2	-DIN6	20	16	25	31.83	34.83	20	30	5	18.3	4.48	0.11
MHGH0150206	2	-DIN6	20	16	24	31.83	34.83	20	50	*	*	4.48	0.15
MHGH0150211	2	-DIN6	21	16	30	33.42	36.42	20	46	5	18.3	5.29	0.30
MHGH0150221	2	-DIN6	22	16	25	35.01	38.01	20	30	5	18.3	5.56	0.14
MHGH0150222	2	-DIN6	22	16	24	35.01	38.01	20	50	*	*	5.56	0.18
MHGH0150251	2	-DIN6	25	16	30	39.78	42.78	20	46	5	18.3	6.37	0.18
MHGH0150252	2	-DIN6	25	16	25	39.79	42.79	20	30	5	18.3	6.37	0.18
MHGH0150253	2	-DIN6	25	16	24	39.79	42.79	20	50	*	*	6.37	0.22
MHGH0150301	2	-DIN6	30	16	25	47.75	50.75	20	30	5	18.3	7.12	0.27
MHGH0150302	2	-DIN6	30	16	24	47.75	50.75	20	50	*	*	7.12	0.31
模数 2 / Module 2													
MHGH0200181	1	-DIN6	18	16	25	38.197	42.20	28	30	5	18.3	7.47	0.20
MHGH0200201	1	-DIN6	20	19	30	42.44	46.40	28	30	6	21.8	8.36	0.20
MHGH0200202	2	-DIN6	20	19	30	42.44	46.40	28	56	6	21.8	8.36	0.20
MHGH0200203	1	-DIN6	20	20	30	42.44	46.40	28	30	6	22.8	8.36	0.20
MHGH0200204	2	-DIN6	20	22	36	42.44	46.40	28	56	6	24.8	8.36	0.20
MHGH0200205	1	-DIN6	20	22	30	42.44	46.40	28	30	6	24.8	8.36	0.20
MHGH0200206	2	-DIN6	20	22	36	42.44	46.40	28	36	6	24.8	8.36	0.20
MHGH0200207	2	-DIN6	20	22	35	42.44	46.44	25	40	6	24.8	8.36	0.26
MHGH0200208	2	-DIN6	20	22	30	42.44	46.44	25	60	*	*	8.36	0.29
MHGH0200211	1	-DIN6	21	16	25	44.56	48.60	28	30	5	18.3	8.81	0.30
MHGH0200212	2	-DIN6	21	22	36	44.56	48.60	28	30	6	24.8	8.81	0.30
MHGH0200221	1	-DIN6	22	19	30	46.69	50.70	28	30	6	21.8	10.38	0.30
MHGH0200222	2	-DIN6	22	19	30	46.69	50.70	28	56	6	21.8	10.38	0.30
MHGH0200223	1	-DIN6	22	22	30	46.69	50.70	28	30	6	24.8	10.38	0.30
MHGH0200224	2	-DIN6	22	22	36	46.69	50.70	28	56	6	24.8	10.38	0.30
MHGH0200225	2	-DIN6	22	22	35	46.69	50.69	25	40	6	24.8	9.27	0.32
MHGH0200226	2	-DIN6	22	22	35	46.69	50.69	25	60	*	*	9.27	0.35
MHGH0200251	1	-DIN6	25	19	30	53.05	57.10	28	30	6	21.8	11.90	0.40
MHGH0200252	2	-DIN6	25	19	30	53.05	57.10	28	56	6	21.8	11.90	0.40
MHGH0200253	1	-DIN6	25	20	30	53.05	57.10	28	30	6	22.8	11.90	0.40
MHGH0200254	1	-DIN6	25	22	30	53.05	57.10	28	30	6	24.8	11.90	0.40
MHGH0200255	2	-DIN6	25	22	36	53.05	57.10	28	56	6	24.8	11.90	0.40
MHGH0200256	1	-DIN6	25	25	36	53.05	57.10	28	30	6	27.8	11.90	0.40
MHGH0200257	2	-DIN6	25	22	35	53.05	57.05	25	40	6	24.8	10.62	0.42
MHGH0200258	2	-DIN6	25	22	30	53.05	57.05	25	60	*	*	10.62	0.45
MHGH0200281	1	-DIN6	28	19	30	59.42	63.40	28	30	6	21.8	13.06	0.40
MHGH0200282	2	-DIN6	28	19	30	59.42	63.40	28	56	6	21.8	13.06	0.40
MHGH0200283	1	-DIN6	28	22	30	59.42	63.40	28	30	6	24.8	13.06	0.40
MHGH0200284	2	-DIN6	28	22	36	59.42	63.40	28	56	6	24.8	13.06	0.40

斜齿齿研齿轮

MHGH-DIN6



单位 / Dimension : mm

系列 MHGH-DIN6 斜齿齿研齿轮
质量等级 DIN 6

材料 SCM415/SCM440
左旋角 19°31'42"
硬度 HRC 50~55°
硬化处理后齿面研磨

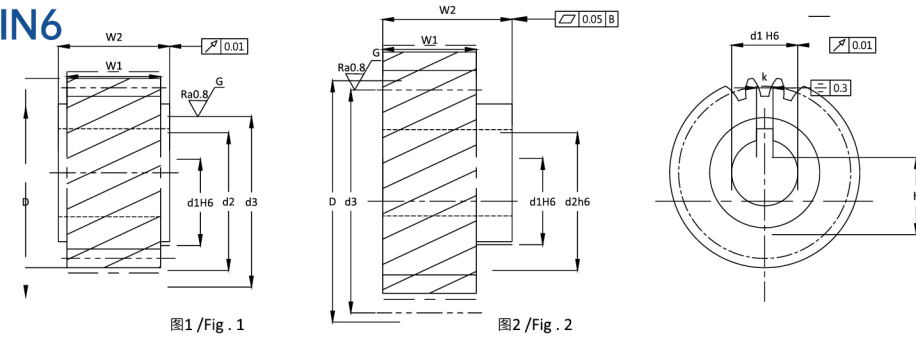
Series MHGH-DIN6 Helical Teeth Ground Pinions
Quality Grade DIN 6

Material SCM415/SCM440
Left Hand Angle 19°31'42"
Hardness: HRC 50~55°
Teeth Ground after Hardening

型号 Code	图 Fig.	DIN	齿数 No. of Teeth	d1	d2	d3	D	W1	W2	k	h	F _{ta} kN	KG
模数 2 / Module 2													
MHGH0200285	1	-DIN6	28	35	48	59.42	63.40	28	30	10	38.3	13.06	0.40
MHGH0200301	1	-DIN6	30	16	25	63.66	67.70	28	30	5	18.3	13.30	0.70
MHGH0200302	1	-DIN6	30	20	30	63.66	67.70	28	30	6	22.8	13.30	0.70
MHGH0200303	2	-DIN6	30	22	36	63.66	67.70	28	56	6	24.8	13.30	0.70
MHGH0200304	1	-DIN6	30	25	36	63.66	67.70	28	30	8	28.3	13.30	0.70
MHGH0200305	1	-DIN6	30	30	45	63.66	67.70	28	30	8	33.3	13.30	0.70
MHGH0200306	2	-DIN6	30	30	50	63.66	67.70	28	60	8	33.3	13.30	0.70
MHGH0200307	2	-DIN6	30	32	55	63.66	67.70	28	65	10	35.3	13.30	0.70
MHGH0200308	2	-DIN6	30	22	35	63.66	67.66	25	40	6	24.8	11.87	0.61
MHGH0200309	2	-DIN6	30	22	30	63.66	67.66	25	60	*	*	11.87	0.64
MHGH0200321	1	-DIN6	32	20	30	67.91	71.90	28	30	6	22.8	13.49	0.70
MHGH0200322	1	-DIN6	32	22	30	67.91	71.90	28	30	6	24.8	13.49	0.70
MHGH0200323	2	-DIN6	32	22	36	67.91	71.90	28	56	6	24.8	13.49	0.70
MHGH0200324	1	-DIN6	32	25	36	67.91	71.90	28	30	8	28.3	13.49	0.70
MHGH0200325	1	-DIN6	32	35	48	67.91	71.90	28	30	10	38.3	13.49	0.70
MHGH0200361	1	-DIN6	36	35	48	76.39	80.40	28	30	10	38.3	13.84	0.80
MHGH0200391	2	-DIN6	39	32	55	82.76	86.80	28	65	10	35.3	14.06	1.40
MHGH0200401	1	-DIN6	40	35	48	84.88	88.90	28	30	10	38.3	14.13	1.20
模数 3 / Module 3													
MHGH0300181	1	-DIN6	18	25	36	54.00	60.00	28	30	8	28.3	12.51	0.40
MHGH0300201	1	-DIN6	20	25	36	60.00	66.00	28	30	8	28.3	14.00	0.50
MHGH0300202	2	-DIN6	20	25	44	63.66	69.70	28	60	8	28.3	14.00	1.10
MHGH0300203	1	-DIN6	20	30	45	63.66	69.70	28	30	8	33.3	14.00	0.50
MHGH0300204	2	-DIN6	20	30	50	63.66	69.70	28	60	8	33.3	14.00	1.10
MHGH0300205	2	-DIN6	20	32	55	63.66	69.70	28	65	10	35.3	14.00	1.20
MHGH0300206	1	-DIN6	20	35	48	63.66	69.70	28	30	10	38.3	14.00	0.50
MHGH0300207	2	-DIN6	20	22	35	63.66	69.66	30	40	6	24.8	15.06	0.69
MHGH0300208	2	-DIN6	20	22	30	63.66	69.66	30	65	*	*	15.06	0.74
MHGH0300209	2	-DIN6	20	32	50	63.66	69.66	30	60	10	35.3	15.06	0.81
MHGH03002010	2	-DIN6	20	32	44	63.66	69.66	30	70	*	*	15.06	0.78
MHGH0300221	1	-DIN6	22	25	36	70.03	76.00	28	30	8	28.3	17.65	0.60
MHGH0300222	1	-DIN6	22	30	45	70.03	76.00	28	30	8	33.3	17.65	0.60
MHGH0300223	2	-DIN6	22	32	55	70.03	76.00	28	65	10	35.3	17.65	1.40
MHGH0300224	1	-DIN6	22	35	48	70.03	76.00	28	30	10	38.3	17.65	0.60
MHGH0300225	2	-DIN6	22	40	62	70.03	76.00	28	65	12	43.3	17.65	1.40
MHGH0300226	2	-DIN6	22	22	35	70.03	76.03	30	40	6	24.8	16.68	0.85
MHGH0300227	2	-DIN6	22	22	30	70.03	76.03	30	65	*	*	16.68	0.90
MHGH0300228	2	-DIN6	22	32	50	70.03	76.03	30	60	10	35.3	16.68	0.96
MHGH0300229	2	-DIN6	22	32	44	70.03	76.03	30	70	*	*	16.68	0.93
MHGH0300251	2	-DIN6	25	22	36	79.58	85.60	28	56	6	24.8	19.01	1.50
MHGH0300252	1	-DIN6	25	25	36	79.58	85.60	28	30	8	28.3	19.01	0.80
MHGH0300253	2	-DIN6	25	25	44	79.58	85.60	28	60	8	28.3	19.01	1.60
MHGH0300254	1	-DIN6	25	30	45	79.58	85.60	28	30	8	33.3	19.01	0.80
MHGH0300255	2	-DIN6	25	30	50	79.58	85.60	28	60	8	33.3	19.01	1.60

斜齿齿研齿轮

MHGH-DIN6



单位 / Dimension : mm

系列 MHGH-DIN6 斜齿齿研齿轮
质量等级 DIN 6

材料 SCM415/SCM440
左旋角 19°31'42"
硬度 HRC 50~55°
硬化处理后齿面研磨

Series MHGH-DIN6 Helical Teeth Ground Pinions
Quality Grade DIN 6

Material SCM415/SCM440
Left Hand Angle 19°31'42"
Hardness: HRC 50~55°
Teeth Ground after Hardening

型号 Code	图 Fig.	DIN	齿数 No. of Teeth	d1	d2	d3	D	W1	W2	k	h	F _{ta} kN	KG
模数 3 / Module 3													
MHGH0300256	2	-DIN6	25	32	55	79.58	85.60	28	65	10	35.3	19.01	1.80
MHGH0300257	1	-DIN6	25	35	48	79.58	85.60	28	30	10	38.3	19.01	0.80
MHGH0300258	2	-DIN6	25	35	55	79.58	85.60	28	65	10	38.3	19.01	1.80
MHGH0300259	1	-DIN6	25	40	70	79.58	85.60	28	50	12	43.3	19.01	1.40
MHGH03002510	2	-DIN6	25	40	62	79.58	85.60	28	65	12	43.3	19.01	1.80
MHGH03002511	2	-DIN6	25	22	35	79.58	85.58	30	40	6	24.8	20.37	1.11
MHGH03002512	2	-DIN6	25	22	30	79.58	85.58	30	65	*	*	20.37	1.17
MHGH03002513	2	-DIN6	25	32	50	79.58	85.58	30	60	10	35.3	20.37	1.23
MHGH03002514	2	-DIN6	25	32	44	79.58	85.58	30	70	*	*	20.37	1.20
MHGH0300281	2	-DIN6	28	32	55	89.13	95.10	28	65	10	35.3	19.59	2.20
MHGH0300282	2	-DIN6	28	40	62	89.13	95.10	28	65	12	43.3	19.59	2.20
MHGH0300301	2	-DIN6	30	22	35	95.49	101.49	30	40	6	24.8	21.37	1.62
MHGH0300302	2	-DIN6	30	22	30	95.49	101.49	30	65	*	*	21.37	1.67
MHGH0300303	2	-DIN6	30	32	50	95.49	101.49	30	60	10	35.3	21.37	1.74
MHGH0300304	2	-DIN6	30	32	44	95.49	101.49	30	70	*	*	21.37	1.71
MHGH0300321	2	-DIN6	32	32	55	101.86	107.85	28	65	10	35.3	20.24	2.80
MHGH0300322	2	-DIN6	32	40	62	101.86	107.85	28	65	12	43.3	20.24	2.00
模数 4 / Module 4													
MHGH0400151	1	-DIN6	15	35	52	63.66	71.70	40	50	10	38.3	17.53	0.80
MHGH0400181	2	-DIN6	18	32	55	76.39	84.40	40	75	10	35.3	23.92	1.60
MHGH0400201	1	-DIN6	20	35	52	84.88	92.90	40	50	10	38.3	26.78	1.30
MHGH0400202	1	-DIN6	20	45	65	84.88	92.90	40	50	14	48.8	26.78	1.30
MHGH0400203	2	-DIN6	20	32	50	84.88	92.88	40	60	10	35.3	26.78	1.67
MHGH0400204	2	-DIN6	20	32	44	84.88	92.88	40	80	*	*	26.78	1.73
MHGH0400205	2	-DIN6	20	40	60	84.88	92.88	40	85	12	43.3	26.78	1.89
MHGH0400206	2	-DIN6	20	40	50	84.88	92.88	40	85	*	*	26.78	1.58
MHGH0400211	2	-DIN6	21	32	55	89.13	97.10	40	75	10	35.3	28.23	2.20
MHGH0400212	2	-DIN6	21	35	55	89.13	97.10	40	75	10	38.3	28.23	2.20
MHGH0400213	2	-DIN6	21	40	62	89.13	97.10	40	75	12	43.3	28.23	2.20
MHGH0400214	2	-DIN6	21	45	68	89.13	97.10	40	75	14	48.8	28.23	2.20
MHGH0400221	1	-DIN6	22	35	52	93.37	101.40	40	50	10	38.3	29.66	1.60
MHGH0400222	1	-DIN6	22	45	65	93.37	101.40	40	50	14	48.8	29.66	1.60
MHGH0400223	2	-DIN6	22	32	50	93.37	101.37	40	60	10	35.3	29.66	2.04
MHGH0400224	2	-DIN6	22	32	44	93.37	101.37	40	80	*	*	29.66	2.10
MHGH0400225	2	-DIN6	22	40	60	93.37	101.37	40	85	12	43.3	29.66	2.26
MHGH0400226	2	-DIN6	22	40	50	93.37	101.37	40	85	*	*	29.66	1.95
MHGH0400241	2	-DIN6	24	32	55	101.86	109.90	40	75	10	35.3	35.79	2.80
MHGH0400242	2	-DIN6	24	35	55	101.86	109.90	40	75	10	38.3	35.79	2.80
MHGH0400243	2	-DIN6	24	40	62	101.86	109.90	40	75	12	43.3	35.79	2.80
MHGH0400244	2	-DIN6	24	45	68	101.86	109.90	40	75	14	48.8	35.79	2.80
MHGH0400245	2	-DIN6	24	55	80	101.86	109.90	40	80	16	59.3	35.79	3.00
MHGH0400251	1	-DIN6	25	35	52	106.10	114.10	40	50	10	38.3	36.22	2.00
MHGH0400252	1	-DIN6	25	45	65	106.10	114.10	40	50	14	48.8	36.22	2.00

MHGH-DIN6

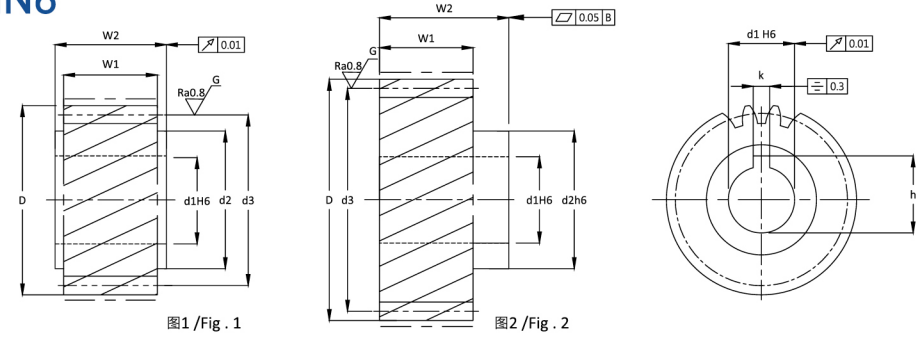


图1 / Fig. 1

图2 / Fig. 2

单位 / Dimension : mm

系列 MHGH-DIN6 斜齿齿研齿轮
质量等级 DIN 6

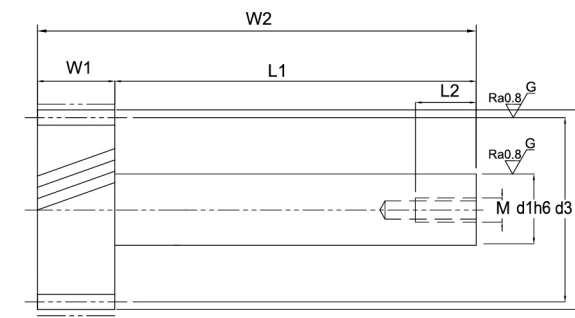
Series MHGH-DIN6 Helical Teeth Ground Pinions
Quality Grade DIN 6

材料 SCM415/SCM440
左旋角 19°31'42"
硬度 HRC 50~55°
硬化处理后齿面研磨

Material SCM415/SCM440
Left Hand Angle 19°31'42"
Hardness: HRC 50~55°
Teeth Ground after Hardening

型号 Code	图 Fig.	DIN	齿数 No. of Teeth	d1	d2	d3	D	W1	W2	k	h	F _{ta} kN	KG
模数 4 / Module 4													
MHGH0400253	2	-DIN6	25	55	80	106.10	114.10	40	80	16	59.3	36.22	3.20
MHGH0400254	2	-DIN6	25	32	50	106.10	114.10	40	60	10	35.3	36.22	2.66
MHGH0400255	2	-DIN6	25	32	44	106.10	114.10	40	80	*	*	36.22	2.72
MHGH0400256	2	-DIN6	25	40	60	106.10	114.10	40	85	12	43.3	36.22	2.88
MHGH0400257	2	-DIN6	25	40	50	106.10	114.10	40	85	*	*	36.22	2.58
MHGH0400301	2	-DIN6	30	32	50	127.32	135.32	40	60	10	35.3	38.00	3.88
MHGH0400302	2	-DIN6	30	32	44	127.32	135.32	40	80	10	*	38.00	3.94
MHGH0400303	2	-DIN6	30	40	60	127.32	135.32	40	85	12	43.3	38.00	4.10
MHGH0400304	2	-DIN6	30	40	50	127.32	135.32	40	85	*	*	38.00	3.80
模数 5 / Module 5													
MHGH0500181	2	-DIN6	18	45	68	95.49	105.50	50	85	14	48.8	37.38	2.90
MHGH0500201	2	-DIN6	20	40	60	106.10	116.10	50	85	12	43.3	41.84	3.34
MHGH0500202	2	-DIN6	20	40	50	106.10	116.10	50	90	*	*	41.84	3.16
MHGH0500221	2	-DIN6	22	40	60	116.71	126.71	50	85	12	43.3	46.34	4.06
MHGH0500222	2	-DIN6	22	40	50	116.71	126.71	50	90	*	*	46.34	3.88
MHGH0500241	2	-DIN6	24	45	68	127.32	137.30	50	85	14	48.8	55.93	4.90
MHGH0500242	2	-DIN6	24	55	80	127.32	137.30	50	90	16	59.3	55.93	5.20
MHGH0500243	2	-DIN6	24	75	110	127.32	137.30	50	110	20	79.9	55.93	6.40
MHGH0500251	2	-DIN6	25	40	60	132.63	142.63	50	85	12	43.3	56.58	5.28
MHGH0500252	2	-DIN6	25	40	50	132.63	142.63	50	90	*	*	56.58	5.10
MHGH0500301	2	-DIN6	30	40	60	159.16	169.16	50	85	12	43.3	59.37	7.66
MHGH0500302	2	-DIN6	30	40	50	159.16	169.16	50	90	*	*	59.37	7.48
模数 6 / Module 6													
MHGH0600201	2	-DIN6	20	55	80	127.32	139.30	60	100	16	59.3	60.26	6.00
MHGH0600202	2	-DIN6	20	75	110	127.32	139.30	60	120	20	79.9	60.26	7.20
MHGH0600203	2	-DIN6	20	55	80	127.32	139.32	60	85	16	59.3	60.26	5.28
MHGH0600204	2	-DIN6	20	55	68	127.32	139.32	60	105	*	*	60.26	5.25
MHGH0600221	2	-DIN6	22	55	80	140.06	152.06	60	85	16	59.3	66.74	6.53
MHGH0600222	2	-DIN6	22	55	68	140.06	152.06	60	105	*	*	66.74	6.50
MHGH0600251	2	-DIN6	25	55	80	159.16	171.20	60	100	16	59.3	81.49	9.00
MHGH0600252	2	-DIN6	25	75	110	159.16	171.20	60	120	20	79.9	81.49	10.80
MHGH0600253	2	-DIN6	25	55	80	159.16	171.16	60	85	16	59.3	81.49	8.64
MHGH0600254	2	-DIN6	25	55	68	159.16	171.16	60	105	*	*	81.49	8.61
MHGH0600301	2	-DIN6	30	55	80	190.99	212.99	60	85	16	59.3	85.49	12.74
MHGH0600302	2	-DIN6	30	55	68	190.99	212.99	60	105	*	*	85.49	12.71
模数 8 / Module 8													
MHGH0800181	2	-DIN6	18	75	110	152.79	168.80	80	140	20	79.9	95.68	11.00
MHGH0800202	2	-DIN6	20	85	125	169.80	185.80	80	145	22	90.4	107.12	14.00
模数 10 / Module 10													
MHGH1000201	2	-DIN6	20	85	125	212.21	232.20	100	165	22	90.4	167.38	26.00

MHGH-L-DIN6



单位 / Dimension : mm

系列 MHGH-L-DIN6 斜齿齿研齿轮轴
质量等级 DIN 6

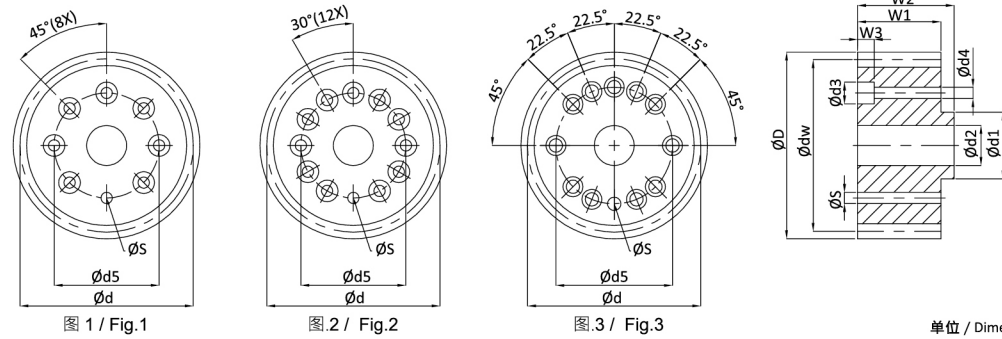
Series MHGH-L-DIN6 Helical Teeth Ground Pinion Shaft
Quality Grade DIN 6

材料 SCM415 / SCM440
左旋角 19°31'42"
硬度 HRC 50~55°
硬化处理后齿面研磨

Material SCM415 / SCM440
Left Hand Angle 19°31'42"
Hardness: HRC 50~55°
Teeth Gound after Hardening

型号 Code	DIN	模数 Module	齿数 No. of Teeth	d1	d3	D	W1	W2	L1	L2	Hole	F _{ta} kN	KG
模数 1.5 / Module 1.5													
MHGH-L-0150201	-DIN6	1.5	20	20h6	31.831	34.831	11.5	110	98.5	19	M8	2.96	0.5
MHGH-L-0150202	-DIN6	1.5	20	20h6	31.831	34.831	14.5	90	75.5	19	M8	3.64	0.6
模数 2.5 / Module 2.5													
MHGH-L-0250161	-DIN6	2.5	16	25h6	42.441	47.441	19.5	108	88.5	22	M10	5.86	0.6
MHGH-L-0250181	-DIN6	2.5	18	25h6	47.747	52.747	19.5	108	88.5	22	M10	6.63	0.7
模数 3 / Module 3													
MHGH-L-0300201	-DIN6	3	20	40h6	63.662	69.662	29.5	162	132.5	28	M12	14.81	1.9
MHGH-L-0300281	-DIN6	3	28	40h6	89.127	95.127	29.5	162	132.5	28	M12	20.64	2.0

MHFGH-DIN6



单位 / Dimension : mm

系列 MHFGH-DIN6 斜齿法兰齿研齿
质量等级 DIN 6

材料 SCM415 / SCM440
硬度 HRC 50~55°
硬化处理后齿面研磨

Series MHFGH-DIN6 Helical Flange Teeth Ground Pinions
Quality Grade DIN 6

Material SCM415/SCM440
Hardness: HRC 50~55°
Teeth Ground after Hardening

型号 Code	图 Fig.	DIN	齿数 No. of Teeth	X^0 转位系数 Shift Coefficient	D	d 节圆直径 Pitch Dia.	d^w 节线啮合直径 Working Pitch Dia.	d1	d2	d3	d4	d5	W1	W2	W3	F_{ta} kN
模数 2 / Module 2																
MHFGH0200261	1	-DIN6	26	0.407	60.800	55.174	56.800	20.0	16.2	9.5	5.5	31.5	26	29	12.0	11.52
MHFGH0200262	1	-DIN6	26	0.407	60.802	55.174	56.802	20.0	16.0	9.5	5.5	31.5	26	31	11.0	11.52
MHFGH0200271	1	-DIN6	27	0.000	61.296	57.296	57.296	20.0	16.2	9.5	5.5	31.5	30	33	11.0	10.95
MHFGH0200272	1	-DIN6	27	0.000	61.296	57.296	57.296	20.0	16.0	9.5	5.5	31.5	26	31	11.0	11.99
MHFGH0200291	1	-DIN6	29	0.415	67.200	61.540	63.200	20.0	16.2	9.5	5.5	31.5	26	29	12.0	12.25
MHFGH0200292	1	-DIN6	29	0.415	67.200	61.540	63.200	25.0	20.3	11.0	6.6	40.0	26	29	10.5	12.25
MHFGH0200293	1	-DIN6	29	0.415	67.200	61.540	63.200	20.0	16.0	9.5	5.5	31.5	26	31	11.0	12.25
MHFGH0200331	1	-DIN6	33	0.393	75.599	70.028	71.599	31.5	23.7	11.0	6.6	50.0	26	29	14.0	12.62
MHFGH0200332	1	-DIN6	33	0.393	75.599	70.028	71.600	31.5	20.0	11.0	6.6	50.0	26	31	11.0	12.62
MHFGH0200351	1	-DIN6	35	0.382	79.800	74.272	75.800	20.0	16.2	9.5	5.5	31.5	26	29	12.0	12.78
MHFGH0200352	1	-DIN6	35	0.382	79.800	74.272	75.800	20.0	16.0	9.5	5.5	31.5	26	31	11.0	12.78
MHFGH0200361	1	-DIN6	36	0.000	80.394	76.394	76.394	31.5	23.7	11.0	6.6	50.0	30	33	8.0	14.83
MHFGH0200362	1	-DIN6	36	0.000	80.394	76.394	76.394	31.5	20.0	11.0	6.6	50.0	26	31	11.0	12.85
MHFGH0200371	1	-DIN6	37	0.421	84.200	78.517	80.200	31.5	23.7	11.0	6.6	50.0	26	29	14.0	12.93
MHFGH0200372	2	-DIN6	37	0.421	84.200	78.517	80.200	31.5	23.7	11.0	6.6	50.0	26	29	14.0	12.93
MHFGH0200373	1	-DIN6	37	0.421	84.200	78.517	80.200	31.5	20.0	11.0	6.6	50.0	26	31	11.0	12.93
模数 3 / Module 3																
MHFGH0300311	2	-DIN6	31	0.354	106.800	98.676	100.800	31.5	23.7	11.0	6.6	50.0	31	35	14.0	22.25
MHFGH0300312	1	-DIN6	31	0.354	106.800	98.676	100.800	31.5	23.7	11.0	6.6	50.0	31	35	14.0	22.25
MHFGH0300313	1	-DIN6	31	0.354	106.800	98.676	100.800	31.5	20.0	11.0	6.6	50.0	31	36	11.0	22.25
MHFGH0300314	3	-DIN6	31	0.354	106.800	98.676	100.800	40.0	31.5	11.0	6.6	63.0	31	36	11.0	22.25
MHFGH0300351	2	-DIN6	35	0.365	119.600	111.409	113.600	50.0	32.2	14.0	9.0	80.0	31	35	10.5	22.86
MHFGH0300352	3	-DIN6	35	0.365	119.598	111.409	113.598	40.0	31.5	11.0	6.6	63.0	31	36	11.0	22.86
MHFGH0300401	2	-DIN6	40	0.379	135.599	127.324	129.599	50.0	32.2	14.0	9.0	80.0	31	35	10.5	23.46
MHFGH0300402	3	-DIN6	40	0.379	135.598	127.324	129.598	40.0	31.5	11.0	6.6	63.0	31	36	11.0	23.46
MHFGH0300403	2	-DIN6	40	0.379	135.598	127.324	129.598	50.0	40.0	14.0	9.0	80.0	31	36	11.0	23.46
模数 4 / Module 4																
MHFGH0400301	2	-DIN6	30	0.000	135.324	127.324	127.324	50.0	32.2	14.0	9.0	80.0	45	49	9.5	42.75
MHFGH0400302	3	-DIN6	30	0.000	135.324	127.324	127.324	40.0	32.2	14.0	9.0	63.0	45	49	9.5	42.75
MHFGH0400303	2	-DIN6	30	0.000	135.324	127.324	127.234	50.0	40.0	14.0	9.0	80.0	41	46	16.0	38.95
MHFGH0400381	2	-DIN6	38	0.240	171.200	161.277	163.200	80.0	56.1	17.5	11.0	125.0	41	45	10.5	40.98
MHFGH0400382	2	-DIN6	38	0.24	171.197	161.277	163.197	80.0	60.0	17.5	11.0	125.0	41	46	16.0	40.98
模数 5 / Module 5																
MHFGH0500211	2	-DIN6	21	0.000	121.109	111.409	111.409	50.0	32.2	14.0	9.0	80.0	59	64	11.5	52.04
MHFGH0500212	2	-DIN6	21	0.000	121.409	111.409	111.409	50.0	40.0	14.0	9.0	80.0	51	56	16.0	44.98
MHFGH0500361	2	-DIN6	36	0.000	200.986	190.986	190.986	80.0	56.1	17.5	11.0	125.0	55	60	12.5	67.96
MHFGH0500362	2	-DIN6	36	0.000	200.986	190.986	190.986	80.0	60.0	17.5	11.0	125.0	51	56	16.0	50.66

前言

本装配说明指南适用于齿条的运输、储存、装配、及保养，在所有相关专业人员从事并进行上述动作时，请先仔细阅读并确实详读本说明书内容，若相关专业人员未仔细阅读或不按相关操作规范进行齿条的运输、储存、装配及保养而产生任何财产损失及人员受伤，本公司不负任何责任赔偿。

齿条安装说明大纲

(一) 运输

运输过程勿不正确堆栈、大力摔放或不正常的吊挂造成齿条扭曲或损伤。

(二) 储存

齿条应储存于干燥环境中，且温度应于 25°C，相对湿度 60% 最为适宜。并确实检查齿条的包装需完整，放置时应保持水平放置，避免倾斜、侧放或直立放置。

(三) 装配

齿条装配请由经过合格训练之专业人员来操作装配，并确保准备相关装配所需使用的器具。

保养事项

请依照齿条运行的方式来制定保养计划。

※ 若有任何问题，请与我司联系。

齿条安装操作说明

(一) 运输

齿条于出厂时均经过整直，防锈以及良好的包装，使用热缩膜来隔离空气并保护齿条以避免碰撞。本公司出产的齿条如果长度超过 1 米 (100cm) 或重量超过 10 公斤时，应由两位或两位以上的操作人员协同搬运，可避免碰撞或不慎掉落。若同时需搬运多支数量之齿条，请使用吊挂栈板，以避免工件滑落；并于吊挂工件时，随时注意周边环境避免工件掉落，或是碰撞周边物品，而砸伤人员。

(二) 储存

齿条应储存于温度适宜并且干燥的环境中，温度 25°C、相对湿度 60% 最为适宜，齿条要进行仓库存放前，应确实检查齿条外部包装的完整性。由于齿条出厂前均经过良好的防锈处理，在齿条上均涂抹防锈油，并经过热缩膜的包装，以隔绝空气接触，并防止碰撞；在储存齿条的过程中，应避免倾斜或是直立的放置齿条。放置齿条的场所，需维持适宜的温度及湿度的稳定，并且放置时应保持场所的稳定避免震动。另外齿条平放时需避免任何不正常的堆栈，或是压迫在齿条的上方，以避免齿条因外力压迫而变形。

The instruction of installation is adapted for transportation, storage, assembly and maintenance of racks. All the relevant professionals should study carefully the content of the instruction before doing the actions as above. If any professionals don't study thoroughly nor follow up the regulations to do the actions of transportation, storage, assembly and maintenance of racks, any property damage or personal injury, we are irresponsible for any compensations.

OUTLINE OF RACK INSTALLATION INSTRUCTIONS

1. TRANSPORTATION

During transportation process, please do not stack incorrectly, vigorously put or hang racks to make it twisted or damaged.

2. STORAGE

Racks should be stored in dry environment with temperature 25 °C , and relative humidity should be 60% which is the best. To check the rack package should be completed and stored horizontally to avoid being sloping, leaning on one side or upright side.

3. ASSEMBLY

Rack assembly should be operated by well-trained and qualified professionals. Meanwhile, please prepare all the relevant tools accurately while assembling.

4. MAINTENANCES

Please set up maintenance plans based on the running methods of rack and pinions.

*If there are any questions, please kindly contact us.

RACK INSTALLATION INSTRUCTIONS

1. TRANSPORTATION

All racks are straightened before delivering, and packed by thermal shrinkage film to isolate the air and to protect racks from collision. If the rack length is over 1,000mm (100cm) or 10 kgs, is should be carried by 2 or more people to avoid collision or dropping.

If carrying plenty of racks, it should be hanged on a pallet to avoid racks dropping. During hanging, please pay attention to the surroundings to avoid dropping or colliding with somethings to injure people.

2. STORAGE

Racks should be stored in a suitable temperate and dry environment. The room temperature should be 25°C, and relative humidity should be 60% which is the best.

Before storage, the rack outside package should be inspected if completed. Before delivering, all the racks are smeared anti-rust lubricant and packed by thermal shrinkage film to isolate air and prevent from collision. During the rack storage process, it should not be sloping, leaning on one side or upright side.

The rack storage place should be maintained in a suitable and stable temperature and humidity. Meanwhile, the place should be stable to avoid vibration.

Racks should be put on horizontally; prevent from any abnormally stacking, or oppress on the top of racks. So, the racks will not be twisted due to outside oppression.

To check the rack package should be completed and stored horizontally to avoid being sloping, leaning on one side or upright side.